

Laite
LED putki G3 TUBE

Teho w
24 w
vanha 58 w

Valmistaja
VALTAVALO

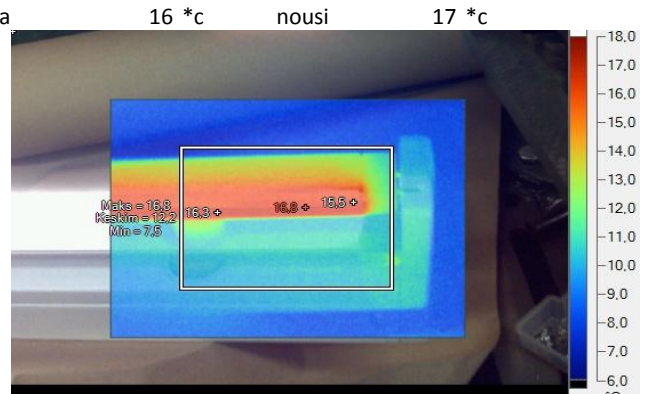
2013

Huom
KONDENSAATTORI OLI KIINNI > TESTISSÄ nro1

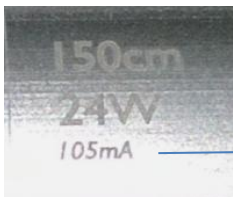
Mallikuva



Lämpökuvaa



4000 Kelviniä
2600 Lumenia



150 cm = vanha 58w

24 w

105 mA

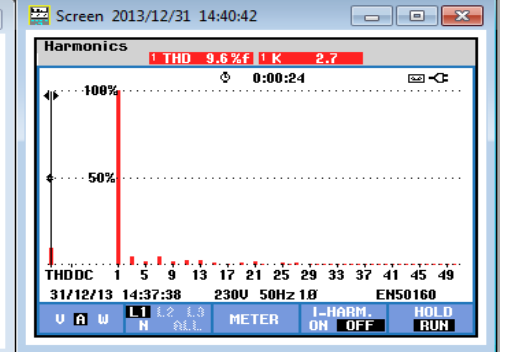
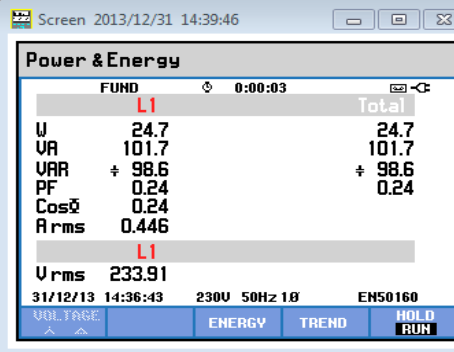
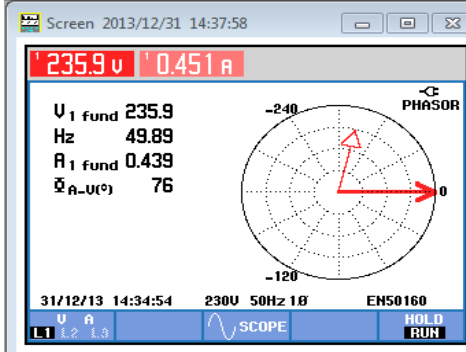
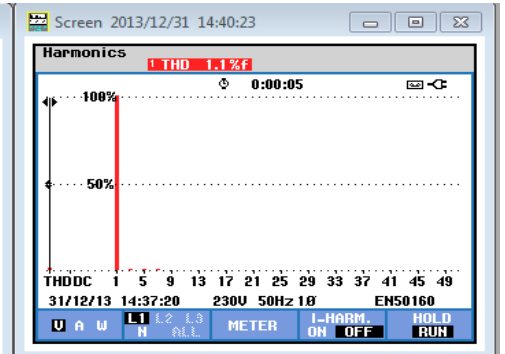
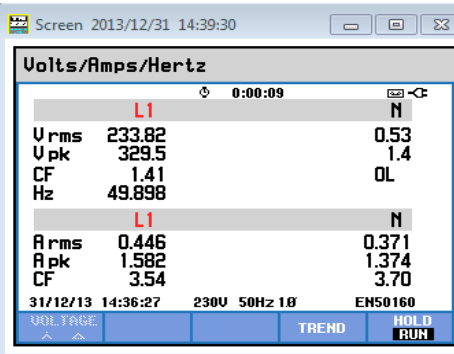
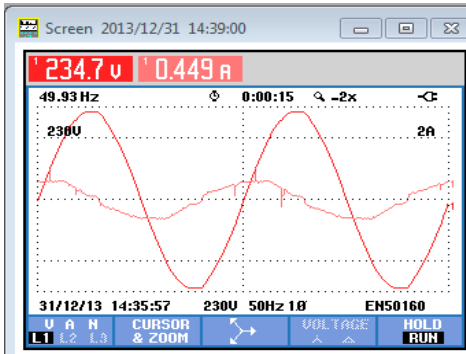
Huonelämpö 5*c



Mittaukset kuvina ja mittausarvoina
Käyrämuoto - kulmaero

Data U, I, P, S, Q, cos

Harmoninen jännite ja virta



1 = 50 Hz
3=150 5=250 7=350 9=450

Posti osoite

Yhteystiedot

Puhelin

www osoitteet

Selekto

Kyntäjantie 17

60800 Ilmajoki

Tuomo Ojala

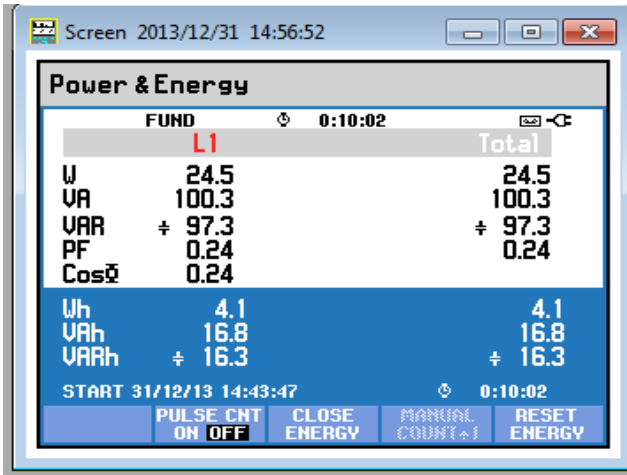
tuomo.ojala@selekto.fi

0400628447

www.selekto.fi

info@selekto.fi

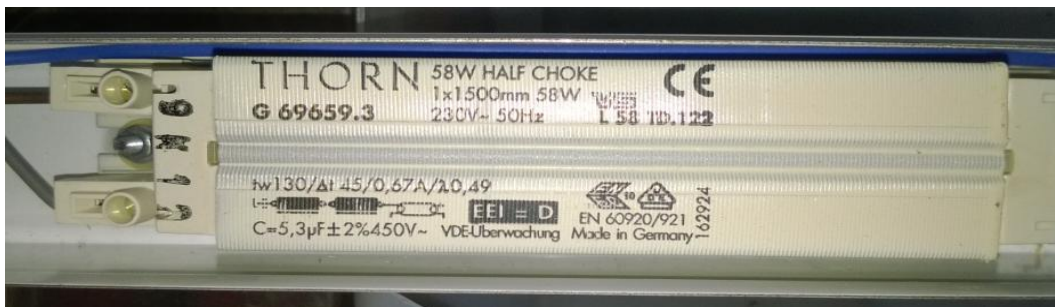
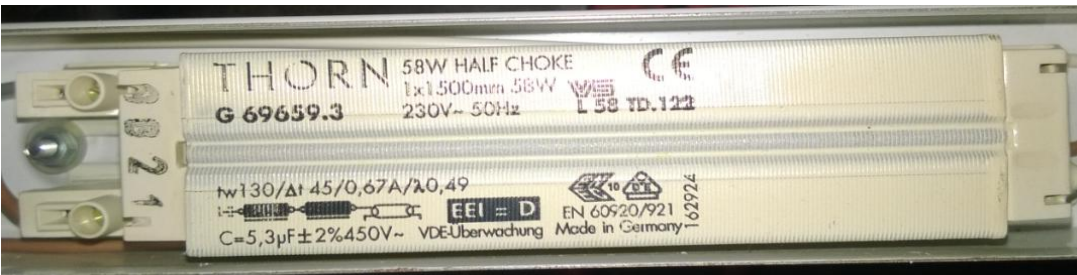
Energiankulutus



| | | |
|--------------------|-------|-----------------|
| TESTISSÄ | 10min | wh |
| Kulutus / 1h | | 4,1 Wh |
| Aika / vrk | | 4 h |
| | yht | 16,4 Wh |
| | = | 0,0164 kWh |
| Vuodessa | | 365 vrk |
| | yht | 5,99 kWh |
| Energiahinta / kwh | | 13 sen |
| | | 77,8 sen |
| | | 0,8 € |

TIETOA

KURISTIMET 2 kpl



KONDENSAATTORI 1 kpl



VAKIOSYTYTIN POISTETTU JA TILALLA LED -SYTYTIN

24 W
 105 mA



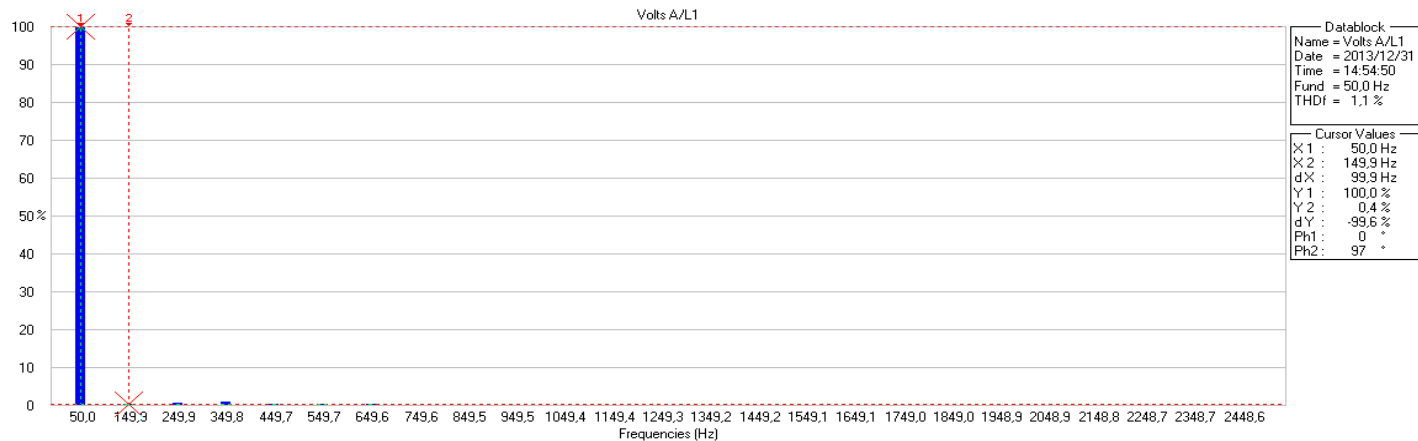
430 mA testissä > KONKKA PAIKALLA ?

HARMONISET tarkemmin L ja N

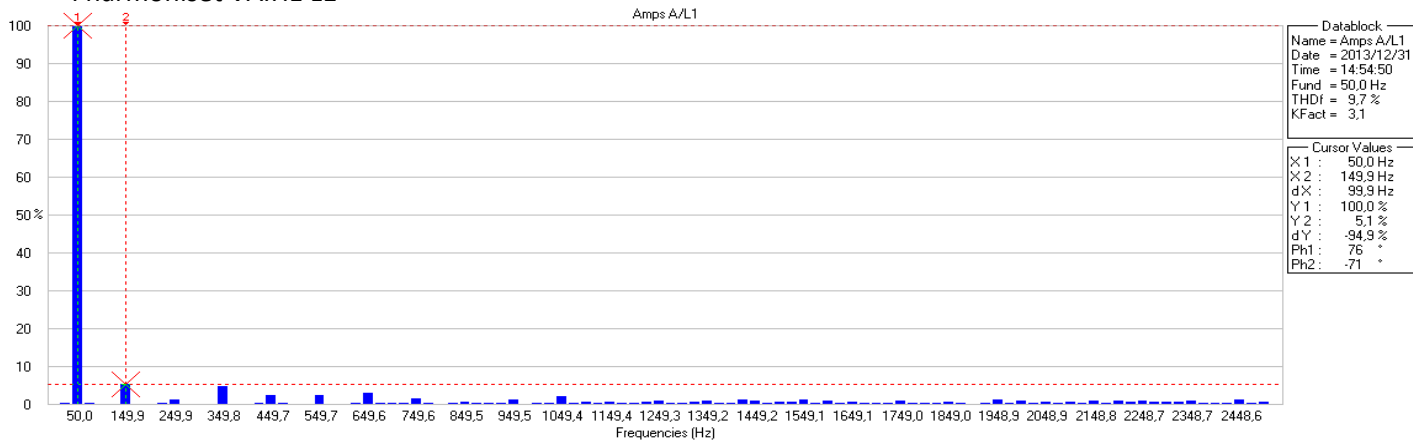
1 - 50 kpl

50 Hz -2500 Hz

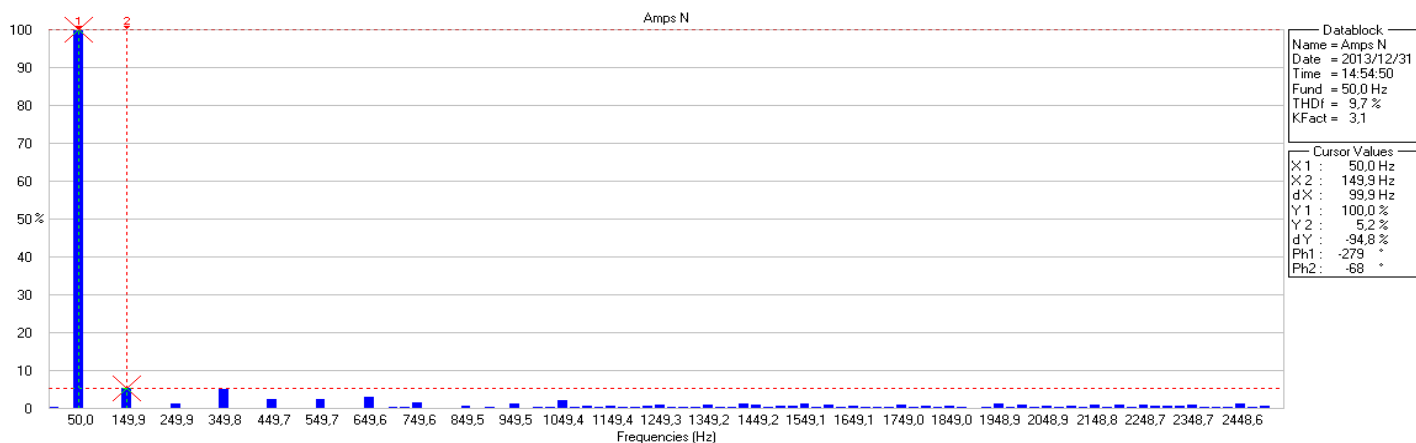
U harmoniset VAIHE L1



I harmoniset VAIHE L1



I harmoniset NOLLA

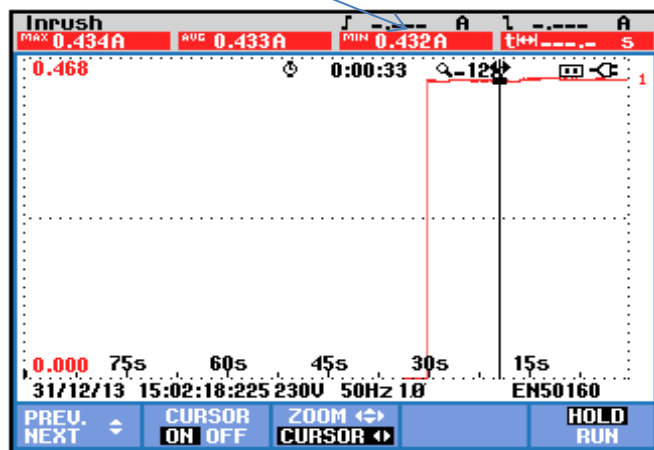
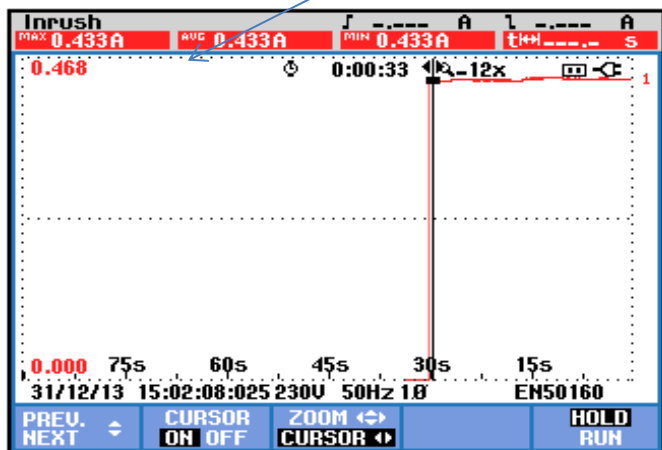


Käynnistysvirta

max 0,43A

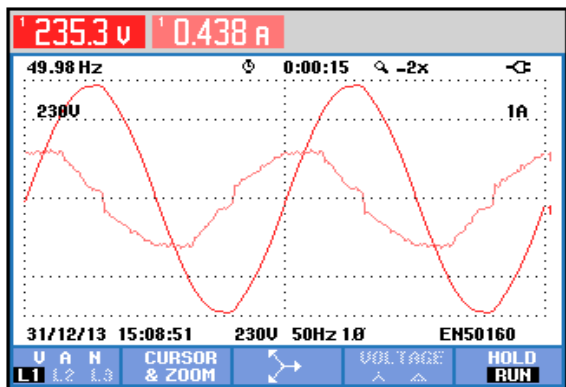
norm 0,432 A

ei muutu

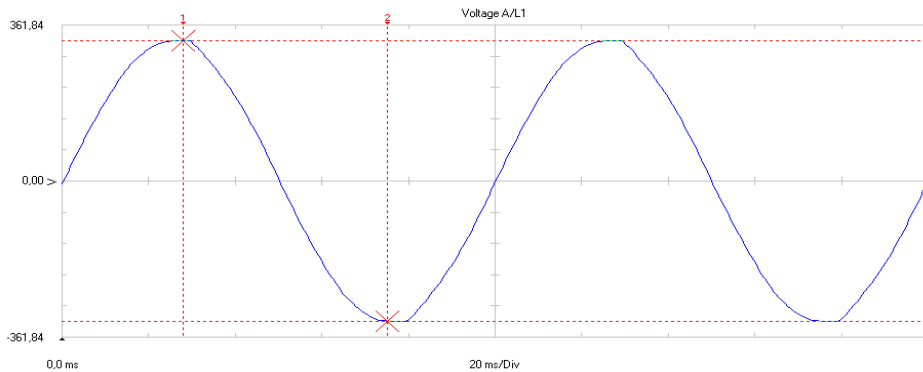


Käynnistuksen jälkeen heti vakio virta >

Lämmin putki



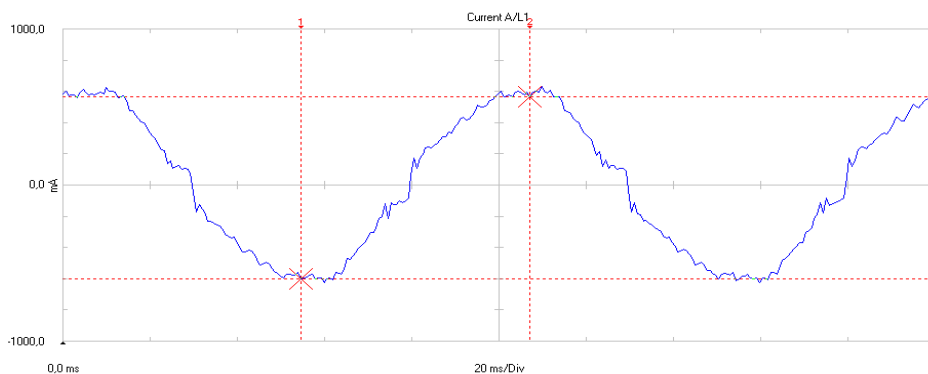
JÄNNITE KÄYRÄ



| Datablock | |
|-----------|----------------|
| Name | = Voltage A/L1 |
| Date | = 2013/12/31 |
| Time | = 15:12:15 |
| Y Scale | = 361,84 V/Div |
| Y At 50% | = 0,00 V |
| X Scale | = 20 ms/Div |
| X At 0% | = 0,0 ms |
| X Size | = 300 (300) |
| Maximum | = 325,77 V |
| Minimum | = -325,57 V |

| Cursor Values | |
|---------------|-----------|
| X1: | 5,6 ms |
| X2: | 15,0 ms |
| dX: | 9,4 ms |
| Y1: | 325,77 V |
| Y2: | -325,78 V |
| dY: | -652,55 V |

VIRTA KÄYRÄ



| Datablock | |
|-----------|----------------|
| Name | = Current A/L1 |
| Date | = 2013/12/31 |
| Time | = 15:12:44 |
| Y Scale | = 1 A/Div |
| Y At 50% | = 0,0 mA |
| X Scale | = 20 ms/Div |
| X At 0% | = 0,0 ms |
| X Size | = 300 (300) |
| Maximum | = 534,1 mA |
| Minimum | = -529,1 mA |

| Cursor Values | |
|---------------|-----------|
| X1: | 10,9 ms |
| X2: | 21,4 ms |
| dX: | 10,5 ms |
| Y1: | -603,9 mA |
| Y2: | 571,2 mA |
| dY: | 1175,1 mA |